



Draycott Close

Abington Vale, Northampton

oriordanbond
SALES & LETTINGS



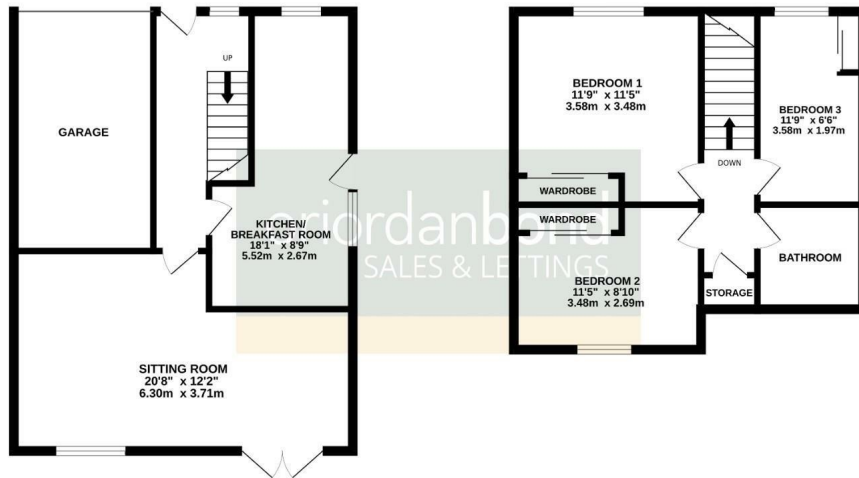
Draycott Close

Abington Vale
NN3 3BD

OFFERS OVER £250,000

GROUND FLOOR
553 sq.ft. (51.3 sq.m.) approx.

1ST FLOOR
414 sq.ft. (38.5 sq.m.) approx.



TOTAL FLOOR AREA: 967 sq.ft. (89.8 sq.m.) approx.

Whilst every attempt has been made to ensure the accuracy of the floorplan contained herein, measurements of doors, windows, rooms and any other items are approximate and no responsibility is taken for any error, omission or mis-statement. This plan is for illustrative purposes only and should be used as such by any prospective purchaser. The services, systems and appliances shown have not been tested and no guarantee as to their operability or efficiency can be given.
Made with Metropix ©2026

O'Riordan Bond is delighted to offer to the market this well presented three bedroom semi-detached family home, located in a quiet cul-de-sac, within sought after Abington Vale. This property is located within close proximity of shops, local amenities and good transport links.

The accommodation comprises entrance hall, sitting/dining room and a kitchen/breakfast room with integrated appliances to include fridge, freezer and washing machine. To the first floor are three bedrooms and a family shower room. Outside is a lawned front garden and driveway leading to an integral garage. The rear garden is landscaped with a range of shrubs and lawn with paved patio area. Further benefits include uPVC double glazing and gas radiator heating. (C/967/M)

Additional information

- Council Tax Band: C
- Energy Efficiency Rating: D

Viewing

Viewing strictly by appointment – details below

Disclaimer

O'Riordan Bond Estate Agents Limited has not tested apparatus, equipment, fittings or services and so cannot verify they are in working order. The buyer is advised to obtain verification from their solicitor or surveyor.

O'Riordan Bond Abington East Sales
01604 639007

abingtoneast@oriordanbond.co.uk

